

TECHNICAL SPECIFICATIONS



3865 North Wickham Road
Melbourne, Florida 32935
Main Office (321) 433-5719
Ticket Office (321) 242-2219

TABLE OF CONTENTS

CONTACT INFORMATION	3
GENERAL INFORMATION	4
FACILITY DIMENSIONS	5-6
SHIPPING	6
LIGHTING SYSTEM AND EQUIPMENT	7
HOUSE HANG LIGHT PLOT	8
SOUND SYSTEM AND EQUIPMENT	10
MONITOR SYSTEM	11
CURTAIN SCHEDULE	12
ROAD COMPANY PROVISIONS	12
FLY SYSTEM	13
FLY SCHEDULE	14
MAIN STAGE (L3HT) GRIDIRON	15
MAIN STAGE (L3HT) THEATER	16
MAIN STAGE (L3HT) SEATING CHART	17
FACILITY MAP	18-20
STUDIO THEATER (BLACK BOX) INFORMATION	21
STUDIO THEATER (BLACK BOX) STAGE	22
ROTUNDA DIMENSION (OUTSIDE BLACK BOX)	23

CONTACT INFORMATION

Nick Palmiotti

General Manager

npalmiotti@asmmelbourne.com

(321) 433-5719

Rob Adams

Director of Facilities

radams@asmmelbourne.com

(321) 433-5822

Brittany Travers

Director of Finance

btravers@asmmelbourne.com

(321) 433-5715

Ashley Dillow

Director of Marketing

adillow@asmmelbourne.com

(321) 433-5720

Paul Edman

Operations Manager

pedman@asmmelbourne.com

(321) 433-5795

Kurt Nall

Event Services Manager

knall@asmmelbourne.com

(321) 433-5791

Chris Stolpe

Box Office Manager

cstolpe@asmmelbourne.com

(321) 433-5714

Vincent Russo

Booking Manager

vrusso@asmmelbourne.com

(321) 433-5823

Chris Merrell

Director of Food and Beverage

cmerrell@asmmelbourne.com

(321) 433-5827

GENERAL INFORMATION

L3 HARRIS TECHNOLOGIES THEATRE

AUDITORIUM CAPACITY: (Continental Seating)

Orchestra Level: 720
Orchestra Pit: 122
Grand Tier: 1,174
TOTAL: 2,016

(Accessible Seating 74 included in above numbers.)

STAGE DIMENSIONS:

Backstage side wall to side wall 120'
Proscenium to back wall 50'
Proscenium opening 27' high by 56' 6" wide
Grid height 68'
Height of clear space in wings (below gallery) 31' 6"
Depth of apron:

- 2' 6" without orchestra pit
- 21' 6" with raised pit

ORCHESTRA PIT:

19' WIDE by 48' LONG, screw jack elevator
Travel distance 10'
Travel speed 2.5 FPM
(See Facility Dimensions Diagram)

STAGE EQUIPMENT:

Complete portable Wenger orchestra shell
(See Attached Fly Schedule)

LOADING DOCK:

Covered, standard loading dock at rear of stage
(2) semi-truck capacity
20' by 10' dock door
Ample parking is available for trucks and busses

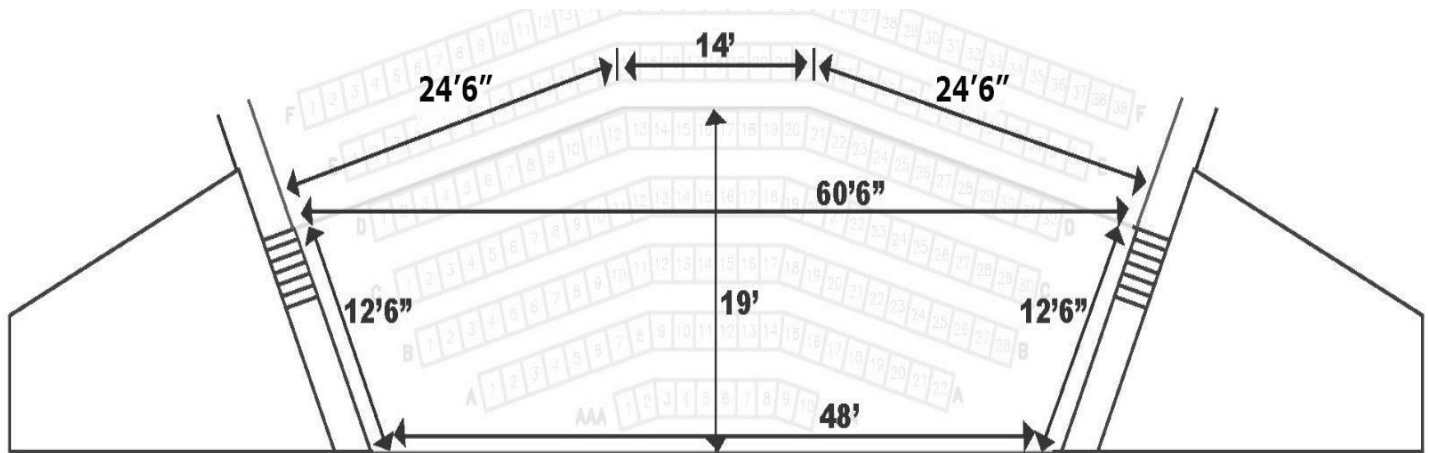
FACILITY DIMENSIONS

L3 HARRIS TECHNOLOGIES THEATRE

STAGE: 120' by 50' (6,000 SQ FT)
 68' Deck to bottom of grid
 Proscenium opening 27' HIGH by 55' 6" WIDE

LOBBY: Main floor 97' by 30' (2,910)
 Mezzanine 97' by 30' (1,649)

ORCHESTRA PIT: 56' 19' (1,064)



BLACK BOX THEATRE: 73' by 45' (3,285 sq ft) – 18' ceiling

REHEARSAL HALL (PA168): 40' by 40' (1,600 sq ft) – 25' ceiling (general use)

REHEARSAL ROOM (PA160): 48' by 38' (1,824 sq ft) – 18' ceiling (choral use)

GREEN ROOM: 24' by 30' (720 sq ft) – serve performers and crew. Equipped with refrigerator, stage audio and video monitor.

SCENE SHOP: 39' by 45' (1,755 sq ft) with 10' by 10' entrance to stage – storage as needed

DRESSING ROOMS:

- (6) “Star” dressing rooms with lavatory and shower (hot and cold water)
- (2) “Chorus” dressing rooms with lavatories and showers (hot and cold water)

WARDROBE ROOM:

- 500 sq ft
- (2) Washers & (2) Dryers
- Ironing Board, Iron & Steamer
- Rolling Wardrobe Racks
- Lark Sink (hot and cold water)

SHIPPING:

We are on a college campus, and it is critical that all shipments be addressed correctly to ensure proper delivery. Note that the **campus mail room is closed** from

Thursday (12:00 PM) – Monday (9:00 AM)

King Center for the Performing Arts
3865 North Wickham Road
Building 9
Melbourne, FL 32935
Attn: Rob Adams

LIGHTING SYSTEM AND EQUIPMENT

L3 HARRIS TECHNOLOGIES THEATRE

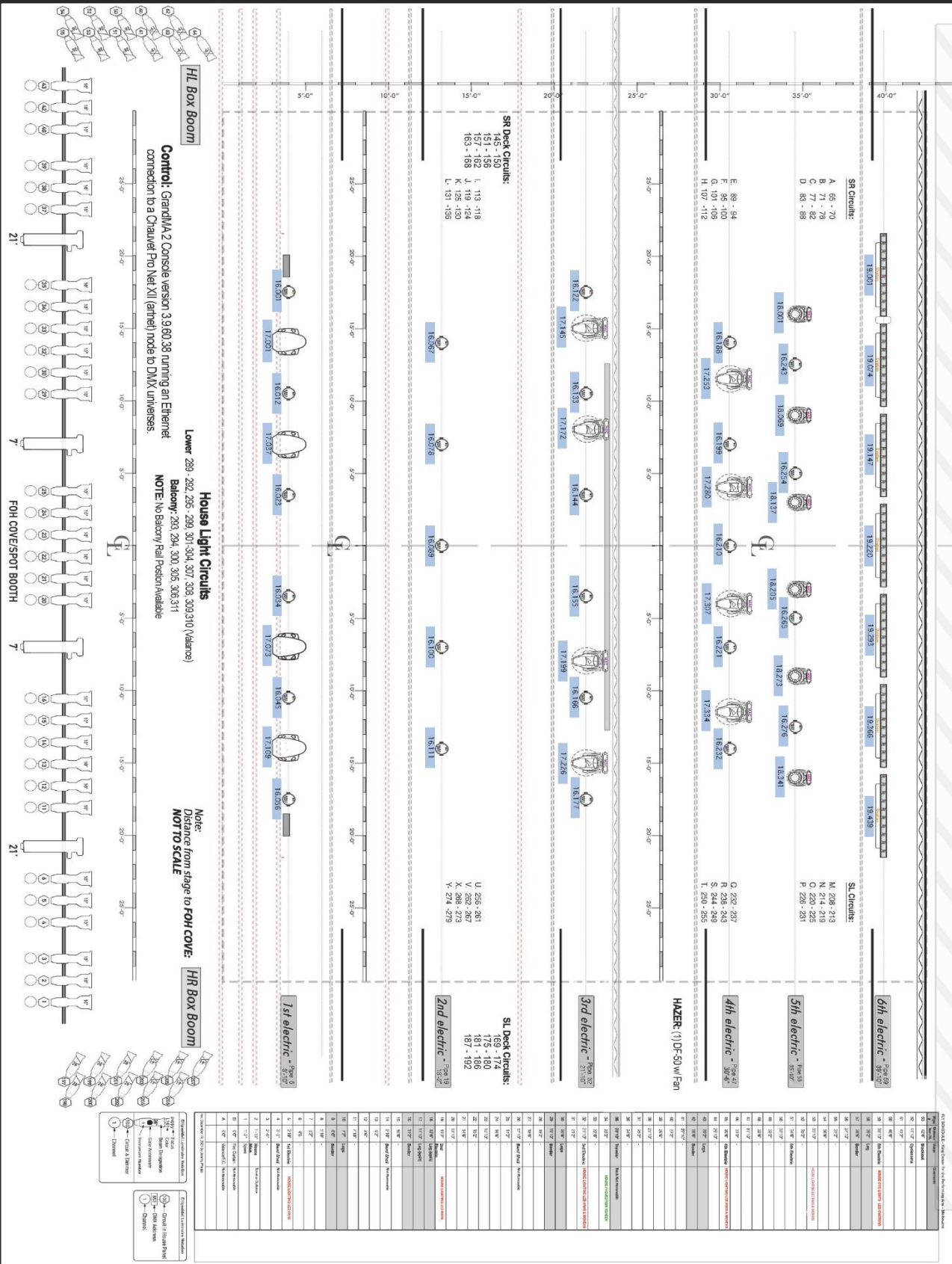
DIMMING AND CONTROL:

Control board: Grand MA2 Light
Dimmers: (253) ETC Sensor CEM3
Circuits: (253) *dimmer per circuit system*

LIGHTING FIXTURES:

32 – Elation – KLP500
10 - Martin Mac Quantum Profile (movers)
4 – Elations Artiste Picasso
6 - Chauvet Maverick MK2 WASH
7 – Chauvet Ovation B-2805FC (CYC)
30 – S4-10 degree ellipsoidal (FOH)
8 – S4 –19 degree ellipsoidal
70 – S4-26 degree ellipsoidal
50 – S4-36 degree ellipsoidal
50 – S4 – Par 64
10 – ACL Bars
2 – 9 light units
2 – 40' double hung lighting with 120 Source 4 Par 64
4 – CM 1-ton capacity chain motors with 75' chain
4 – Lycian 1.2 kw Superstar follow spots
8 – 10' pipe and base booms

CROSS-OVER/STORAGE AREA



HL Box Boom

Control: GrandMA 2 Console version 3.9.80.38 running an Ethernet connection to a Chauvet Pro Net X12 (panel) node to DMX universes.

House Light Circuits

Lower: 289 - 292, 295 - 299, 301-304, 307, 308, 309,310 (Vlanos)
 Balcony: 293, 294, 300, 305, 306,311

NOTE: No Balcony Rail Position Available

Note:
 Distance from stage to FOH COVE:
NOT TO SCALE

HL Box Boom

Channel	Channel Name	Channel Type
1	DMX	DMX
2	DMX	DMX
3	DMX	DMX
4	DMX	DMX
5	DMX	DMX
6	DMX	DMX
7	DMX	DMX
8	DMX	DMX
9	DMX	DMX
10	DMX	DMX
11	DMX	DMX
12	DMX	DMX
13	DMX	DMX
14	DMX	DMX
15	DMX	DMX
16	DMX	DMX
17	DMX	DMX
18	DMX	DMX
19	DMX	DMX
20	DMX	DMX
21	DMX	DMX
22	DMX	DMX
23	DMX	DMX
24	DMX	DMX
25	DMX	DMX
26	DMX	DMX
27	DMX	DMX
28	DMX	DMX
29	DMX	DMX
30	DMX	DMX
31	DMX	DMX
32	DMX	DMX
33	DMX	DMX
34	DMX	DMX
35	DMX	DMX
36	DMX	DMX
37	DMX	DMX
38	DMX	DMX
39	DMX	DMX
40	DMX	DMX
41	DMX	DMX
42	DMX	DMX
43	DMX	DMX
44	DMX	DMX
45	DMX	DMX
46	DMX	DMX
47	DMX	DMX
48	DMX	DMX
49	DMX	DMX
50	DMX	DMX
51	DMX	DMX
52	DMX	DMX
53	DMX	DMX
54	DMX	DMX
55	DMX	DMX
56	DMX	DMX
57	DMX	DMX
58	DMX	DMX
59	DMX	DMX
60	DMX	DMX
61	DMX	DMX
62	DMX	DMX
63	DMX	DMX
64	DMX	DMX
65	DMX	DMX
66	DMX	DMX
67	DMX	DMX
68	DMX	DMX
69	DMX	DMX
70	DMX	DMX
71	DMX	DMX
72	DMX	DMX
73	DMX	DMX
74	DMX	DMX
75	DMX	DMX
76	DMX	DMX
77	DMX	DMX
78	DMX	DMX
79	DMX	DMX
80	DMX	DMX
81	DMX	DMX
82	DMX	DMX
83	DMX	DMX
84	DMX	DMX
85	DMX	DMX
86	DMX	DMX
87	DMX	DMX
88	DMX	DMX
89	DMX	DMX
90	DMX	DMX
91	DMX	DMX
92	DMX	DMX
93	DMX	DMX
94	DMX	DMX
95	DMX	DMX
96	DMX	DMX
97	DMX	DMX
98	DMX	DMX
99	DMX	DMX
100	DMX	DMX

Channel	Channel Name	Channel Type
1	DMX	DMX
2	DMX	DMX
3	DMX	DMX
4	DMX	DMX
5	DMX	DMX
6	DMX	DMX
7	DMX	DMX
8	DMX	DMX
9	DMX	DMX
10	DMX	DMX
11	DMX	DMX
12	DMX	DMX
13	DMX	DMX
14	DMX	DMX
15	DMX	DMX
16	DMX	DMX
17	DMX	DMX
18	DMX	DMX
19	DMX	DMX
20	DMX	DMX
21	DMX	DMX
22	DMX	DMX
23	DMX	DMX
24	DMX	DMX
25	DMX	DMX
26	DMX	DMX
27	DMX	DMX
28	DMX	DMX
29	DMX	DMX
30	DMX	DMX
31	DMX	DMX
32	DMX	DMX
33	DMX	DMX
34	DMX	DMX
35	DMX	DMX
36	DMX	DMX
37	DMX	DMX
38	DMX	DMX
39	DMX	DMX
40	DMX	DMX
41	DMX	DMX
42	DMX	DMX
43	DMX	DMX
44	DMX	DMX
45	DMX	DMX
46	DMX	DMX
47	DMX	DMX
48	DMX	DMX
49	DMX	DMX
50	DMX	DMX
51	DMX	DMX
52	DMX	DMX
53	DMX	DMX
54	DMX	DMX
55	DMX	DMX
56	DMX	DMX
57	DMX	DMX
58	DMX	DMX
59	DMX	DMX
60	DMX	DMX
61	DMX	DMX
62	DMX	DMX
63	DMX	DMX
64	DMX	DMX
65	DMX	DMX
66	DMX	DMX
67	DMX	DMX
68	DMX	DMX
69	DMX	DMX
70	DMX	DMX
71	DMX	DMX
72	DMX	DMX
73	DMX	DMX
74	DMX	DMX
75	DMX	DMX
76	DMX	DMX
77	DMX	DMX
78	DMX	DMX
79	DMX	DMX
80	DMX	DMX
81	DMX	DMX
82	DMX	DMX
83	DMX	DMX
84	DMX	DMX
85	DMX	DMX
86	DMX	DMX
87	DMX	DMX
88	DMX	DMX
89	DMX	DMX
90	DMX	DMX
91	DMX	DMX
92	DMX	DMX
93	DMX	DMX
94	DMX	DMX
95	DMX	DMX
96	DMX	DMX
97	DMX	DMX
98	DMX	DMX
99	DMX	DMX
100	DMX	DMX

INSTRUMENT KEY

STAGE

Chauvet Orion B-288FC (7)

Chauvet

Marreck MKII Mesh (6)

Mac Quantum Profile (10)

Elation KL Par FC (20)

Elation Atlas Paraso (4)

36 Degree Source4 Ellipsoidal

26 Degree Source4 Ellipsoidal

19 Degree Source4 Ellipsoidal

FOH COVE

Two 8x8 fixtures with front handles

10 Degree Source4 Ellipsoidal (20)

Lycian Super Star 12kW Followspot (4)

LIGHT PLOT HOUSE HANG

Drawn by: Jeremy Matthew Pridges
 P.O. Box 1372548
 Email: j.pridges@kingcenter.com
 Member #14755 Local 831

LIGHT PLOT

Scale: 3/8"

Sheet 1

Revised: January 2, 2023

FIELD VERIFY ALL DIMENSIONS

KING CENTER FOR THE PERFORMING ARTS

Project # 10744
 Date: 08-11-15
 Drawn By: B. ROLAND
 Checked By: S. BREL

FOR THE PERFORMING ARTS
 FOR BALCONY LIGHTING

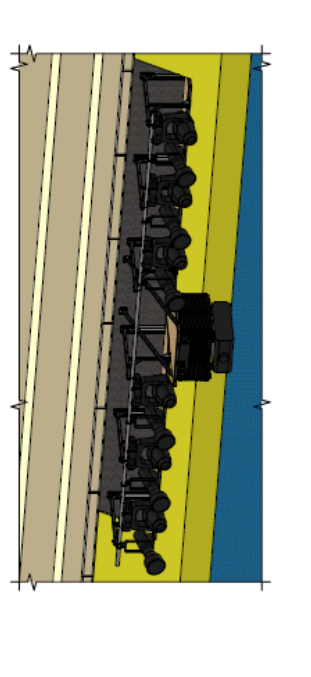
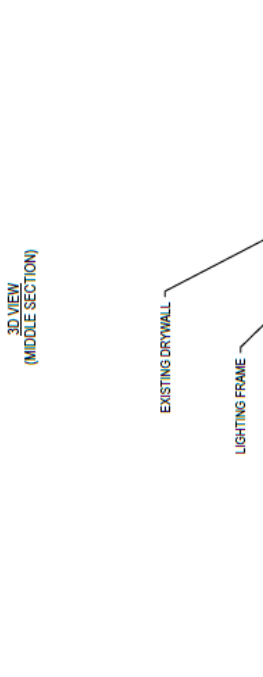
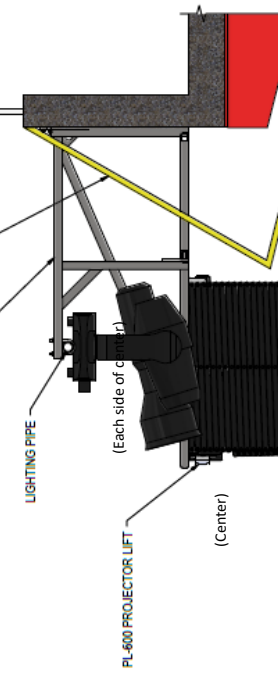
InterAmerica Stage, Inc.
 5401 Broadway Lane, Sanford, FL 32773
 Tel: (407) 302-0881 Fax: (407) 302-0882



InterAmerica Stage, Inc.
 1401 Broadway Lane, Sanford, FL 32773
 Tel: (407) 302-0881 Fax: (407) 302-0882

REV	DATE	DESCRIPTION

A B C D E F G H



1 2 3 4 5 6

SOUND SYSTEM AND EQUIPMENT

L3 HARRIS TECHNOLOGIES THEATRE

SPEAKERS:

JBL Professional VTX A12 8/Side

JBL Professional VTX A12W 2/Side

JBL Professional VTX B28 6@Center

JBL VTX A-8 Deck Fills 3/Side

JBL VTX B-18 Deck Subs 1/Side

JBL SRX715 Balcony Delay 4 Boxes

JBL AC28/95 Front Fills 6 Boxes

AMPLIFIERS:

28 Crown I-Tech H12000 HD power all speakers

4 Crown IT4x3500 HDS Speak On Version

Version 6 Presets with Performance Manager console

AES Drive Lines

CONSOLE:

DiGiCo SD12 console with Fourier Exchange Engine VTS 3 Plug-in Server

Local I/O 8x8 4x4 AES

Fiber Optic loop with 56x24 32 BIT I/O Rack Onstage & SD Mini Rack @ FOH w/ 4x4 AES I/O, 8x8 Analog I/O

56 Channel copper snake with XLR fan out on FOH end and analog split on stage with XLR fan out

MONITOR SYSTEM

L3 HARRIS TECHNOLOGIES THEATRE

CONSOLES: DiGiCo SD8
Yamaha PM5D NON RH
(24 discrete mixes available)

WEDGE SPEAKERS: 16 - JBL VTX M20 2x10
18 – JBL Concert Series Model 4802 (2-way)
2 – 12” speaker
1 – 2” horn

SIDE FILLS: 4 – JBL SRX 715
1 – 15” speaker
1 – 2” horn

MICROPHONES:

8 Channels – Shure Axient wireless w/ 8 ADX2 Handheld Mics

OR

8 Channels – ADX1 Body Packs
Available Capsules: (8) BETA 87C – (8) BETA 58 – (8) SM 58

8 Available Lavaliers – 8 MKE-2

DYNAMIC:

- 16 – Shure SM58
- 10 – Shure SM57
- 2 – Shure Beta 52
- 9 – Sennheiser 421
- 2 – Audix OM-5
- 1 – Audix D6
- 4 – Audix D2
- 4 - Audix D4
- 2 – Beta 91

CONDENSER:

- 2 – AKG 414
- 2 – Shure SM87
- 6 – Shure SM81
- 2 – Shure BETA SM91
- 3 – Audix SCX1
- 4 – Shure 412 Podium Mics
- 4 – AT 2021
- 2 – AKG 214

DIRECT BOX: 14-Countryman Model 85 (Active)
2-Radial Stereo (Passive) PRO D12
2-Radial Stereo Pro AV2

PAGING: Dressing rooms, green room, front of house and/or lobby

CURTAIN SCHEDULE

L3 HARRIS TECHNOLOGIES THEATRE

SIZE	COLOR	MATERIAL	QUANTITY	TYPE
32' H x 14' W	Black	Velour	6 pairs	Leg
16' H x 70' W	Black	Velour	5	Border
30' H x 70' W	Black	Velour	1	Backdrop
28' H x 60' W	Black	Velour	1	Traveler
30' H x 60' W	Green	Velour	1	Act Curtain
30' H x 60' W	Natural	Cloth	1	Cyclorama
30' H x 60' W	Black	Sharks Tooth	1	Scrim

ROAD COMPANY PROVISIONS

AUDIO

1 – 200-amp 3 phase disconnect (isolated earth ground) with cam connectors
Stage Right & Stage Left

LIGHTING

1 – 400-amp 3 phase disconnect company switch with cam connectors
1 – 600-amp 3 phase disconnect company switch

BUS POWER

3 – Bay each with 2-phase 250-volt, 50-amp receptacles

All electrical service is stage right, audio ONLY stage left (1) 200-amp service. All approximately 25' from proscenium. The building is equipped with one upright electric man lift, having a working height of up to 42'.

FLY SYSTEM

L3 HARRIS TECHNOLOGIES THEATRE

Arbor Capacity 1,500 lbs.

Arbor Capacity (Electrics) 2,000 lbs.

Batten Low Trim 4' off deck

Length of Travel 61'

Height to bottom of grid 67'

Height to pin rail 38' 6"

Available Weight:

Upstairs: 15,000 lbs.

Downstairs: 4,550 lbs.

Total: 19,550 lbs.

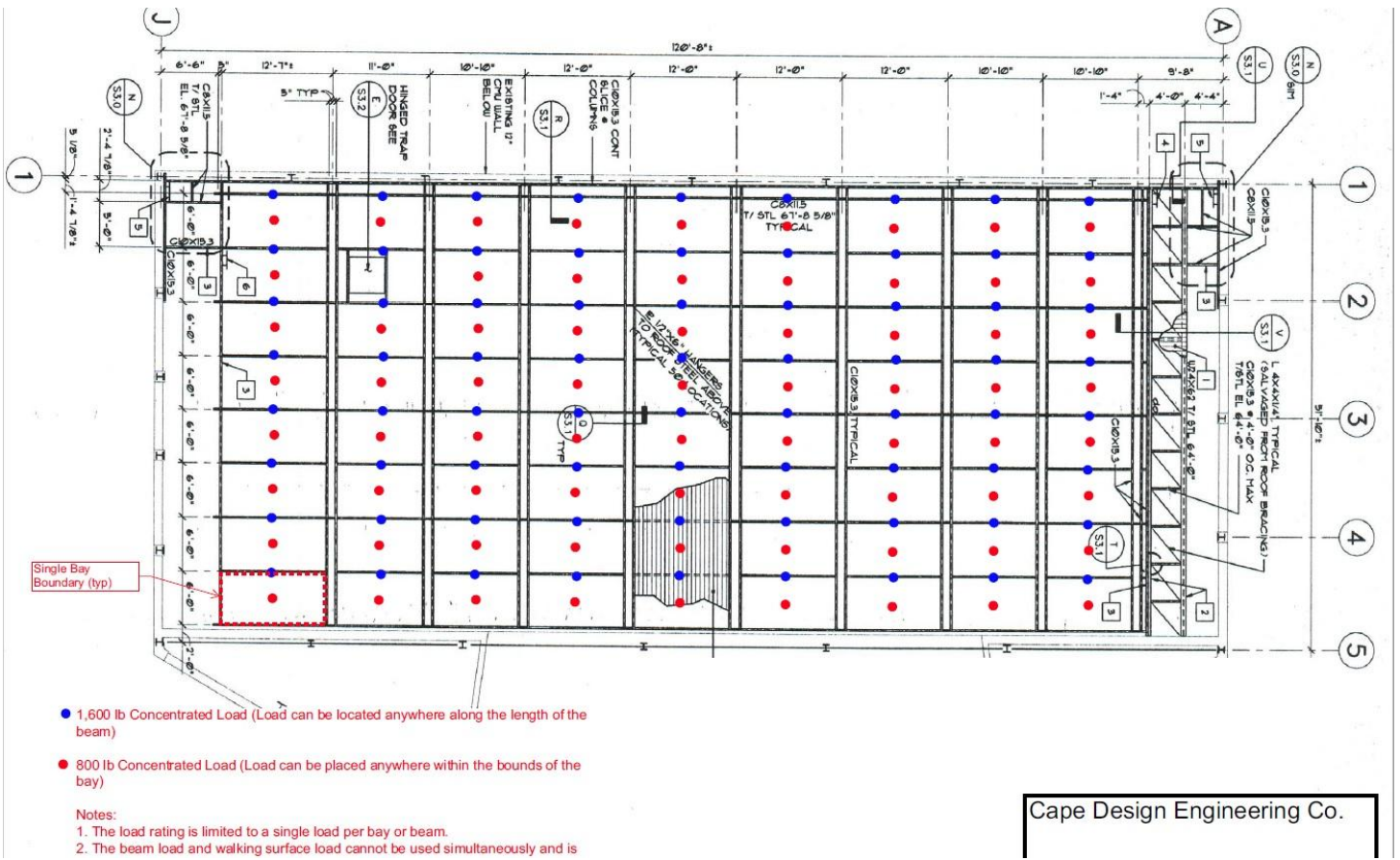
Pipe #	Distance from P.L	Usage	Comments
A	0'0"	Valance/F.C.	<i>Not Removable</i>
B	0'0"	Fire Curtain	<i>Not Removable</i>
1	1'2"	Spare	
2	1'10"	House Main	Travel or Guillotine
3	2'6"	Legs	
4	3'2"	Band Shell	<i>Not Removable</i>
5	3'10"	1st Electric	HOUSE LED's & ELATION PICASSO'S
6	4'6"	Spare	
7	5'2"	Spare	
8	5'10"	Spare	
9	6'6"	Border	
10	7'2"	Leg	
11	7'10"	Spare	
12	8'6"	Spare	
13	9'2"	Spare	
14	9'10"	Band Shell	<i>Not Removable</i>
15	10'6"	Spare	
16	11'2"	Border	
17	11'10"	Leg (split)	
18	12'6"	Leg (split)	
19	13'2"	2nd Electric	HOUSE LED's
20	13'10"	Spare	
21	14'6"	Spare	
22	15'2"	Spare	
23	15'10"	Spare	
24	16'6"	Spare	
25	17'2"	Spare	
26	17'10"	Band Shell	<i>Not Removable</i>
27	18'6"	Spare	
28	19'2"	Spare	
29	19'10"	Border	
30	20'6"	Leg	
31	21'2"	Spare	
32	21'10"	3rd Electric	HOUSE LED's & MOVERS
33	22'6"	Spare	HOUSE PROJECTION SCREEN
34	23'2"	Spare	
35	23'10"	Traveler	<i>Track Not Removable</i>
36	24'6"	Spare	
37	25'2"	Spare	
38	25'10"	Spare	
39	26'6"	Spare	
40	27'2"	Spare	
41	27'10"	Spare	
42	28'6"	Border	
43	29'2"	Leg	
44	29'10"	Spare	
45	30'6"	4th Electric	HOUSE LED's & MOVERS
46	31'2"	Spare	
47	31'10"	Spare	
48	32'6"	Spare	
49	33'2"	Spare	
50	33'10"	Spare	
51	34'6"	Spare	
52	35'2"	Spare	
53	35'10"	5th Electric	HOUSE LED's & MAVERICKS
54	36'6"	spare	
55	37'2"	Spare	
56	37'10"	Spare	
57	38'6"	Border	
58	39'2"	Leg	
59	39'10"	6th Electric	HOUSE LED OVATIONS
60	40'6"	Spare	
61	41'2"	Spare	
62	41'10"	Cyc	
63	42'6"	Blackout	

GRID IRON

L3 HARRIS TECHNOLOGIES THEATRE

Allowed Uniform Live Load Capacity

A total distributed live load of 20 psi is acceptable.



STAGE MAP

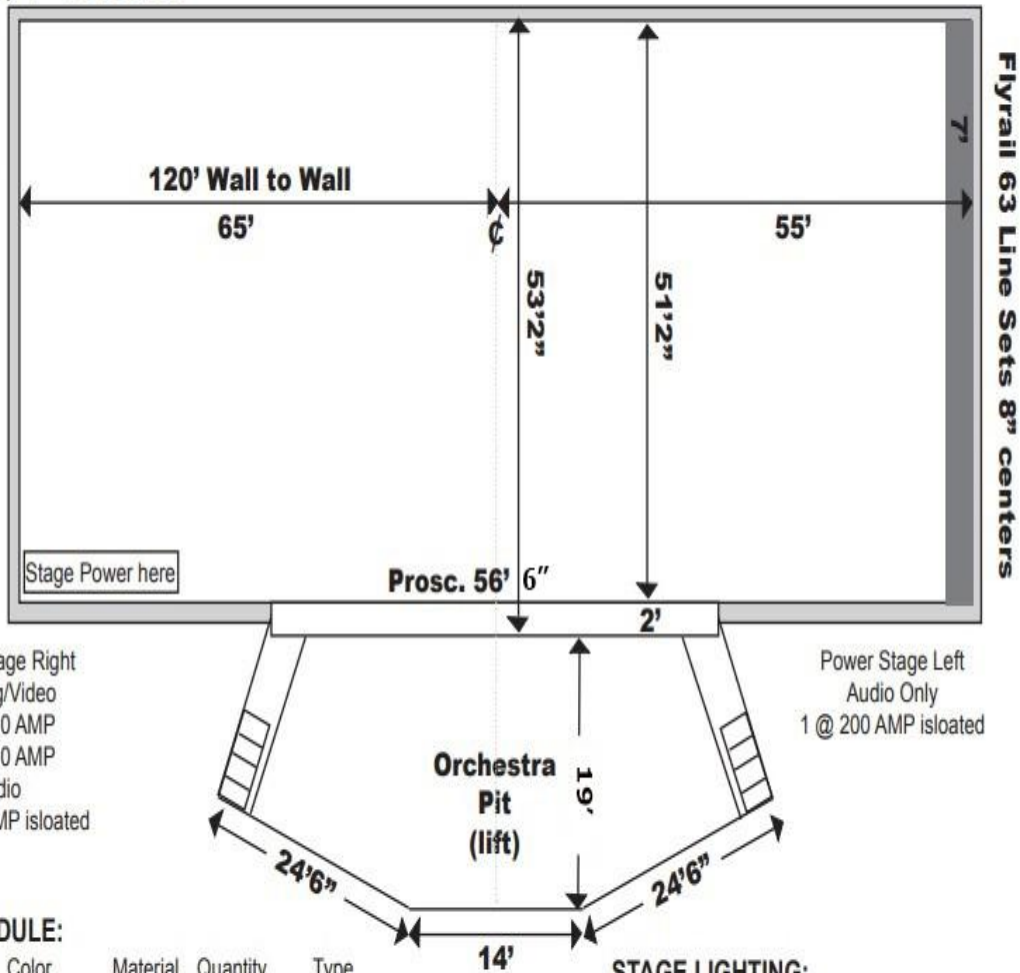
L3 HARRIS TECHNOLOGIES THEATER



Melbourne, Florida

Stage Map

Proscenium 27' x 56'6"
 Stage 120' x 53'
 Apron 2'
 Orchestra Pit 56' x 19'



CURTAIN SCHEDULE:

Size	Color	Material	Quantity	Type
32'H x 14'W	Black	Velour	6 pairs	Leg
16'H x 70'W	Black	Velour	5	Border
30'H x 70'W	Black	Velour	1	Backdrop
28'H x 60'W	Black	Velour	1	Traveler
30'H x 60'W	Green	Velour	1	Act Curtain
30'H x 60'W	Sky Blue	Cloth	1	Cyclorama
30'H x 60'W	Black	Sharks Tooth	1	Scrim
General House Goods Hang (48' Leg to Leg)				

STAGE LIGHTING:

1. SEE LIGHTING PLOT FOR OVERHEAD
2. FOH Fixtures are all S4-10 degree instruments. Box boom units are S4-26 degree instruments.
3. Spot Lights: 4-Lycian 1.2 kw superstar
4. 68' to grid on stage.

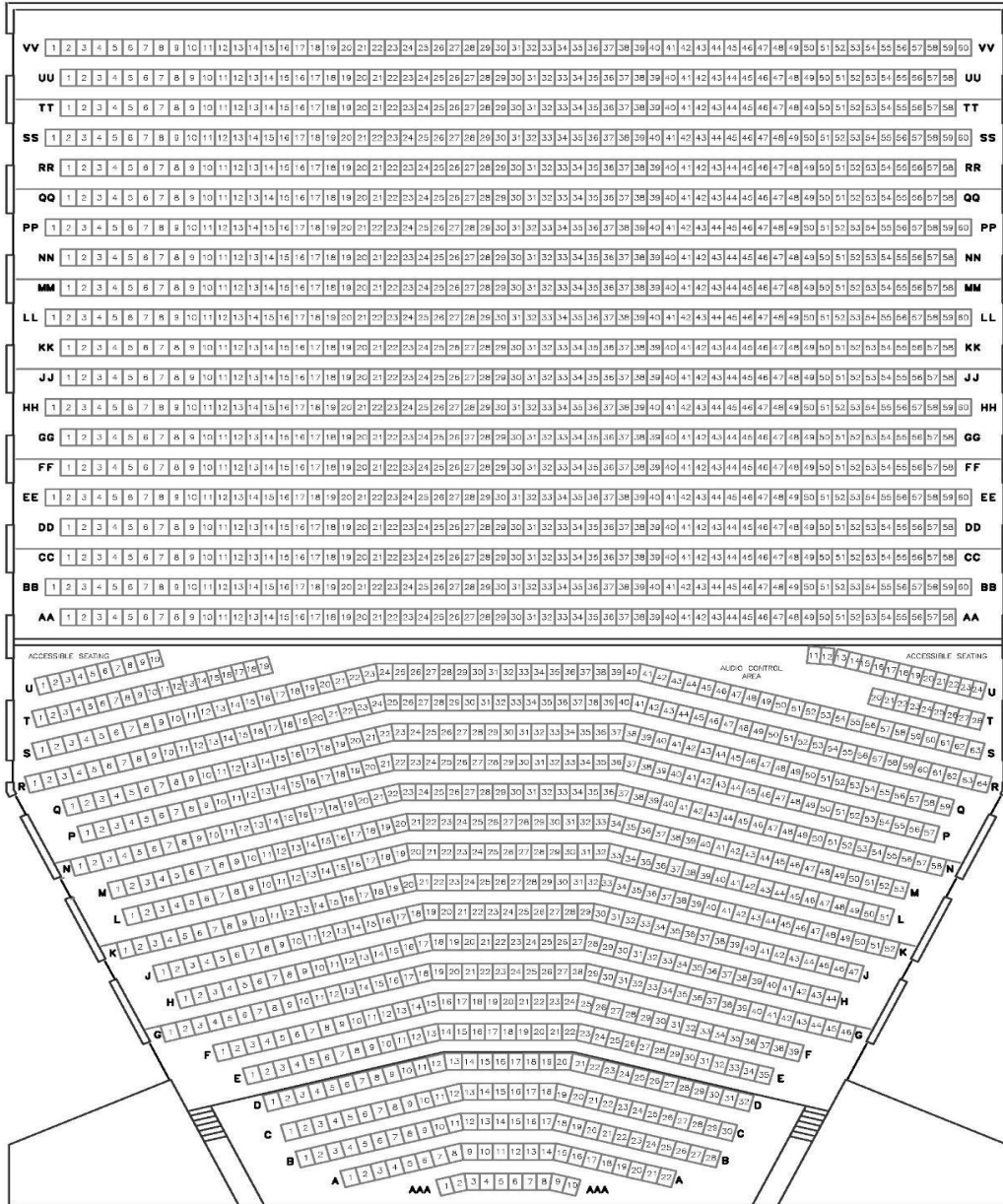
Not to Scale
10/2017 DB

THEATER SEATING CHART

L3 HARRIS TECHNOLOGIES THEATER

GRAND TIER

GRAND TIER



ORCHESTRA

ORCHESTRA

Administration - 321.433.5719

Ticket Office - 321.242.2219

FAX - 321.433.5817

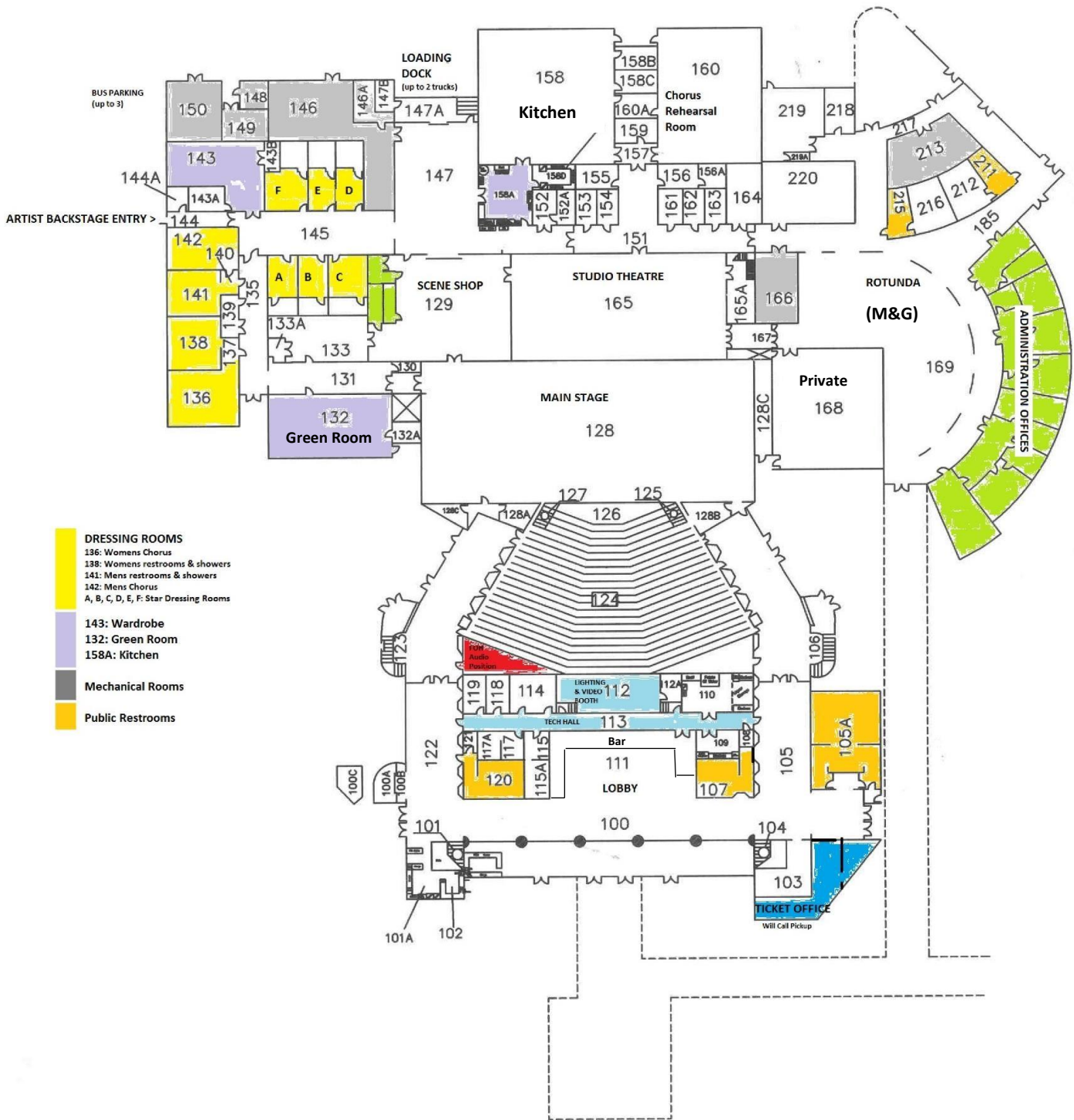


Total Seating Capacity	2016
Orchestra Pit	122
Orchestra	720
Grand Tier	1174
Accessible Seating (included in above numbers)	74

REVISION DATE : 08/2014

FACILITY MAP

MAXWELL KING CENTER FOR THE PERFORMING ARTS



FACILITY PARKING MAP

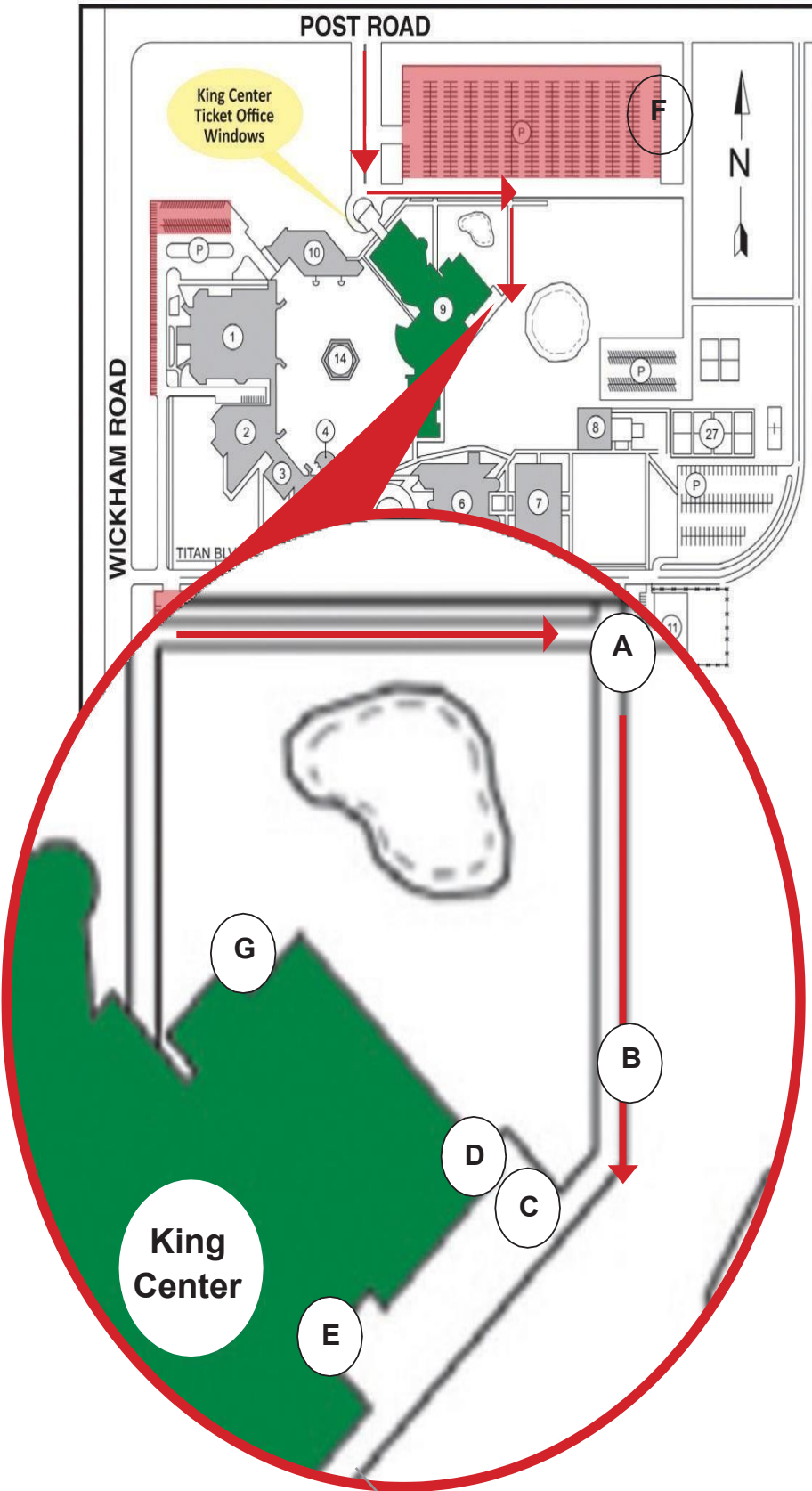
The King Center is located on the corner of Post and Wickham Roads in Melbourne, Florida.

Directions from Interstate 95 Southbound: Take Exit 188/East onto 404 Pineda Causeway Extension toward Satellite Beach/Patrick Air Force Base. At end of exit ramp, turn east (left) onto 404. Continue about 2.5 miles, then turn right onto CR-509/Wickham Road going south for 2 miles. Then turn left onto Post Road. The King Center entrance is on the south side of Post Road (first right).

Directions from Interstate 95 Northbound: Take Exit 188/East onto 404 Pineda Causeway Extension toward Satellite Beach/Patrick Air Force Base. At end of ramp turn right onto 404. Continue about 2.5 miles, then turn right onto CR-509/Wickham Road going south for 2 miles. Then turn left onto Post Road. The King Center entrance is on the south side of Post Road (first right).

Directions from Highway 1 Southbound: Heading south on Hwy1, turn right onto Post Road, continue for approximately 1.5 miles. The King Center entrance is on the south side of Post Road (on the left) just beyond the EFSC Tennis Courts. **Directions from Highway 1 Northbound:** Heading north on Hwy 1, turn left onto Post Road, continue for approximately 1.5 miles. The King Center entrance is on the south side of Post Road (on the left) just beyond the EFSC Tennis Courts.

KING CENTER ENTRANCE



King Center for the Performing Arts
3865 N Wickham Rd
Melbourne, FL 32935

Located on the campus of Eastern Florida State College, Building 9 (in green)

- A - Artist/Bus/Truck Entrance**
- B - Gate (Code Required)**
- C - Artist Bus Parking**
- D - Backstage Entrance**
- E - Loading Dock**
- F - Additional Semi-Truck Parking**
- G - Green Room Outside Entrance**

INFORMATION

STUDIO THEATER (BLACK BOX THEATER)



GENERAL:

Capacity: 250+/- flexible seating

Dimensions: 45' by 73' (3255 sq. ft.)
Ceiling height: 18' floor to grid (tension wire rope grid)
Direct entrance into scene shop

DIMMING AND CONTROL:

Grand MA3 on PC Command Wing
Circuits: 96

LIGHTING FIXTURES:

12 - Chauvet Rogue R2x Wash – Not Movable
6 – Lightronics 5in 1 LED PARS
5 – MH2 Martin Wash – Not Movable
6 – ETC 26* LEKO's
5 – S4 – PAR's

AUDIO CONSOLE:

Midas M32 Digital Console
Inputs 32 XLR, 8 AUX
Outputs 16 XLR, 1 AES

STAGE BOX:

Midas DL32 Digital Snake – 32 inputs / 16 outputs XLR

MAIN SPEAKERS:

Main hang: JBL Concert Series Model 4850 (2 per side flown)
Main deck: JBL Concert Series Auxiliary Sub Model 4842 (1 per side)
Down fill: JBL Concert Series Model 4825 (1 per side)
Zone control: DBX 4800
Front Fill: JBL Marquis Series Model MS26 (4 across front)

POWER AMPS:

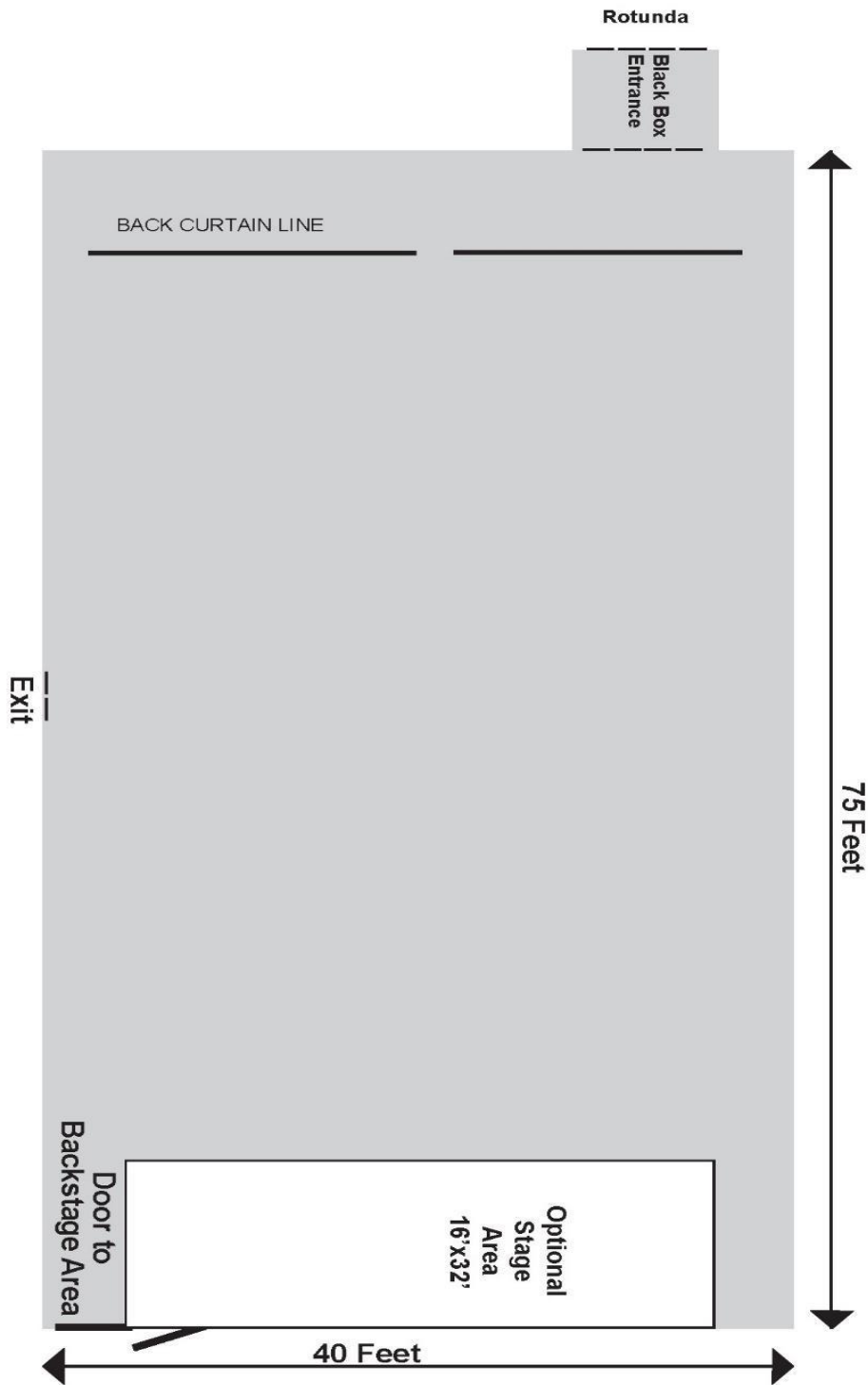
Crown I-Tech 6000 & 4000

MONITOR SPEAKERS:

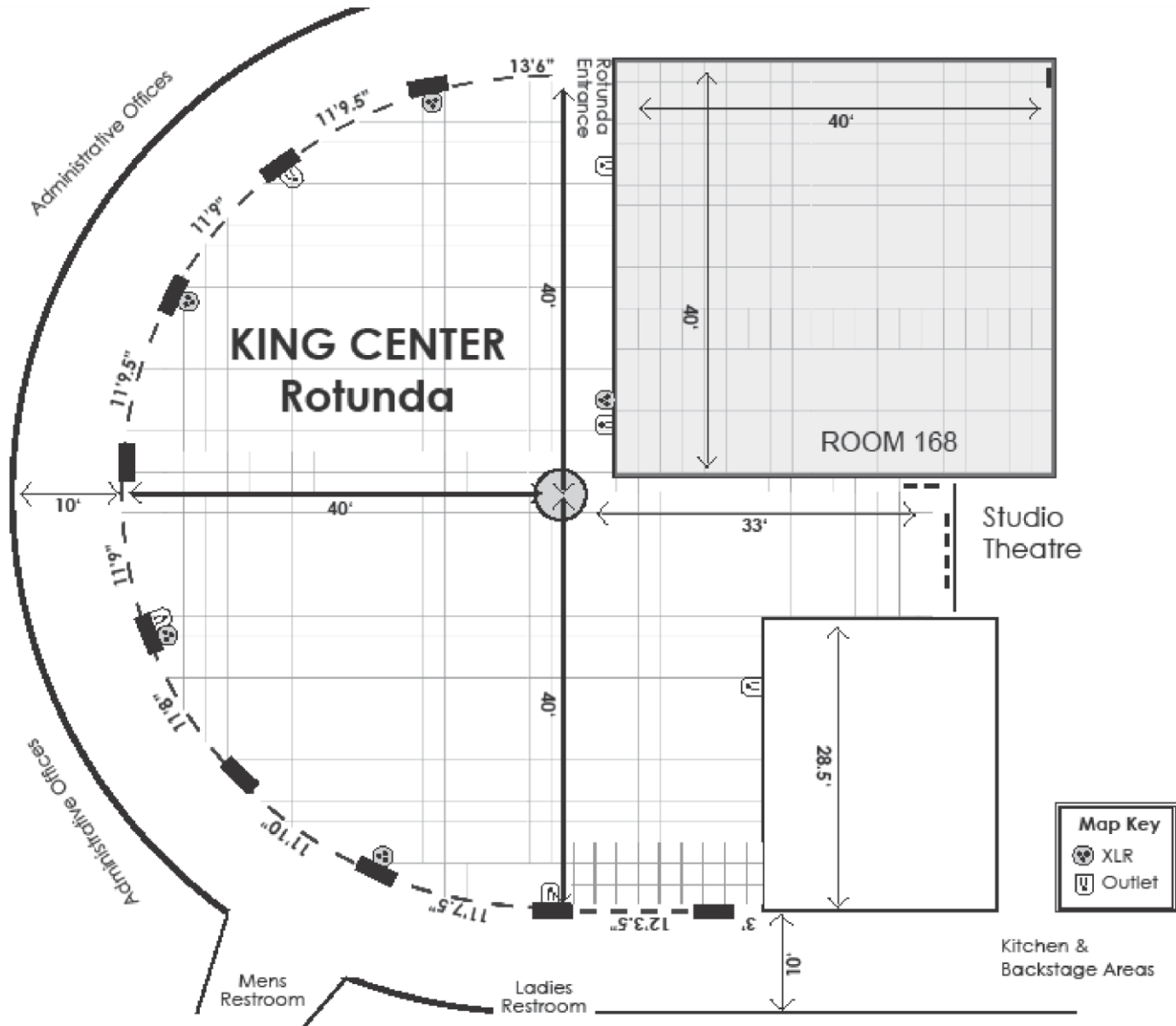
JBL VTX M20 10"x10"x2" Wedges
6 - In House Mixes of JBL M20 Wedges
3 -Crown Amps IT 4x3500 HD

STAGE

STUDIO THEATER (BLACK BOX THEATER)



ROTUNDA DIMENSIONS OUTSIDE OF STUDIO THEATER (BLACK BOX THEATER)



THE END