

TECHNICAL SPECIFICATIONS



3865 North Wickham Road
Melbourne, Florida 32935
Main Office (321) 433-5719
Ticket Office (321) 242-2219

TABLE OF CONTENTS

CONTACT INFORMATION	3
GENERAL INFORMATION	4
FACILITY DIMENSIONS	5-6
LIGHTING SYSTEM AND EQUIPMENT	7
HOUSE HANG LIGHT PLOT	8
SOUND SYSTEM AND EQUIPMENT	9
MONITOR SYSTEM	10
CURTAIN SCHEDULE	11
ROAD COMPANY PROVISIONS	11
FLY SYSTEM	12
FLY SCHEDULE	13
MAIN STAGE (L3HT) GRID IRON	14
MAIN STAGE (L3HT) THEATER	15
MAIN STAGE (L3HT) SEATING CHART	16
FACILITY MAP	17-19
STUDIO THEATER (BLACK BOX) INFORMATION	20
STUDIO THEATER (BLACK BOX) STAGE	21
ROTUNDA DIMENSION (OUTSIDE BLACK BOX)	22

CONTACT INFORMATION

Bob Papke

General Manager

bpapke@asmglobal.com

(321) 433-5719

Rob Adams

Director of Facilities

radams@asmmelbourne.com

(321) 433-5822

Ricky Gonzales

Director of Facilities Accounting

rgonzales@asmglobal.com

(321) 433-5722

Ashley Dillow

Director of Marketing

adillow@asmmelbourne.com

(321) 433-5720

Paul Edman

Operations Manager

pedman@asmmelbourne.com

(321) 433-5795

Melissa Queen

Event Services Manager

mqueen@asmmelbourne.com

(321) 433-5791

Chris Stolpe

Box Office Manager

cstolpe@asmmelbourne.com

(321) 433-5714

Vincent Russo

Booking Manager

vrusso@asmmelbourne.com

(321) 433-5823

Chris Merrell

Director of Food and Beverage

cmerrell@asmmelbourne.com

(321) 433-5827

GENERAL INFORMATION

L3 HARRIS TECHNOLOGIES THEATRE

AUDITORIUM CAPACITY: (Continental Seating)

Orchestra Level: 720
Orchestra Pit: 122
Grand Tier: 1,174
TOTAL: 2,016

(Accessible Seating 74 included in above numbers.)

STAGE DIMENSIONS:

Backstage side wall to side wall 120'
Proscenium to back wall 50'
Proscenium opening 27' high by 56' 6" wide
Grid height 68'
Height of clear space in wings (below gallery) 31' 6"
Depth of apron:

- 2' 6" without orchestra pit
- 21' 6" with raised pit

ORCHESTRA PIT:

19' WIDE by 48' LONG, screw jack elevator
Travel distance 10'
Travel speed 2.5 FPM
(See Facility Dimensions Diagram)

STAGE EQUIPMENT:

Complete portable Wenger orchestra shell
(See Attached Fly Schedule)

LOADING DOCK:

Covered, standard loading dock at rear of stage
(2) semi-truck capacity
20' by 10' dock door
Ample parking is available for trucks and busses

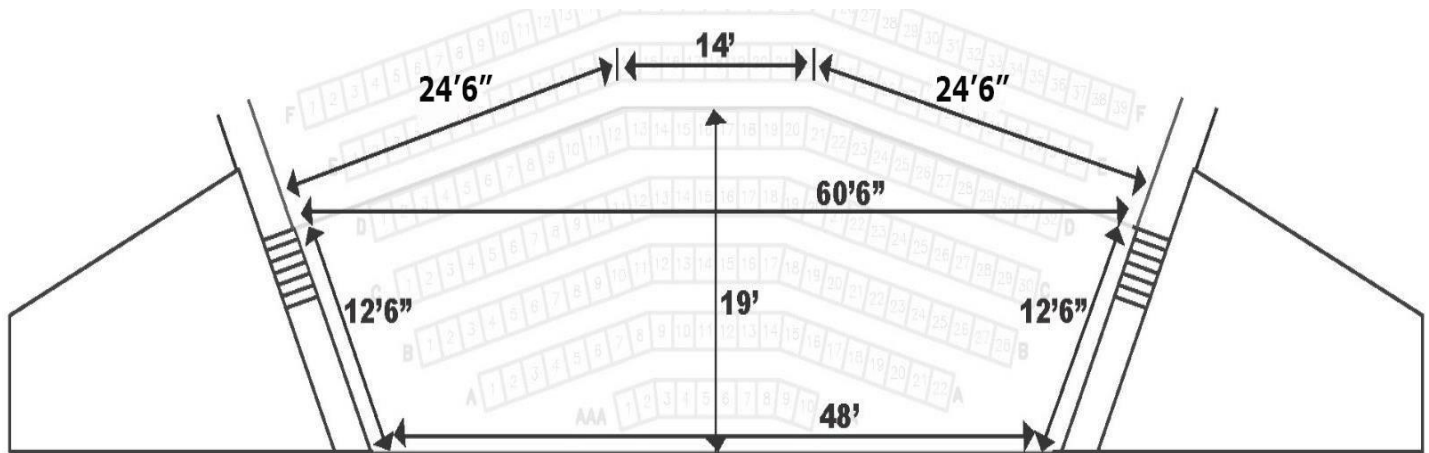
FACILITY DIMENSIONS

L3 HARRIS TECHNOLOGIES THEATRE

STAGE: 120' by 50' (6,000 SQ FT)
 68' Deck to bottom of grid
 Proscenium opening 27' HIGH by 55' 6" WIDE

LOBBY: Main floor 97' by 30' (2,910)
 Mezzanine 97' by 30' (1,649)

ORCHESTRA PIT: 56' 19' (1,064)



BLACK BOX THEATRE: 73' by 45' (3,285 sq ft) – 18' ceiling

REHEARSAL HALL (PA168): 40' by 40' (1,600 sq ft) – 25' ceiling (general use)

REHEARSAL ROOM (PA160): 48' by 38' (1,824 sq ft) – 18' ceiling (choral use)

REHEARSAL ROOM (PA158): 50' by 48' (2,400 sq ft)–18' ceiling (instrumental use)

GREEN ROOM: 24' by 30' (720 sq ft) – serve performers and crew. Equipped with refrigerator, stage audio and video monitor.

SCENE SHOP: 39' by 45' (1,755 sq ft) with 10' by 10' entrance to stage – storage as needed

DRESSING ROOMS:

- (6) “Star” dressing rooms with lavatory and shower (hot and cold water)
- (2) “Chorus” dressing rooms with lavatories and showers (hot and cold water)

WARDROBE ROOM:

- 500 sq ft
- (2) Washers & (2) Dryers
- Ironing Board, Iron & Steamer
- Rolling Wardrobe Racks
- Lark Sink (hot and cold water)

THE PLAN

- 1. Take things out of the truck.**
- 2. Do the show.**
- 3. Put things back inside the truck.**
- 4. Repeat.**

LIGHTING SYSTEM AND EQUIPMENT

L3 HARRIS TECHNOLOGIES THEATRE

DIMMING AND CONTROL:

Control board: Grand MA2 Light

Dimmers: (253) ETC Sensor CEM3

Circuits: (253) *dimmer per circuit system*

LIGHTING FIXTURES:

32 – Elation – KLP500

10 - Martin Mac Quantum Profile (movers)

4 – Elations Artiste Picasso

6 - Chauvet Maverick MK2 WASH

7 – Chauvet Ovation B-2805FC (CYC)

30 – S4-10 degree ellipsoidal (FOH)

8 – S4 –19 degree ellipsoidal

70 – S4-26 degree ellipsoidal

50 – S4-36 degree ellipsoidal

50 – S4 – Par 64

10 – ACL Bars

2 – 9 light units

2 – 40' double hung lighting with 120 Source 4 Par 64

4 – CM 1-ton capacity chain motors with 75' chain

4 – Lycian 1.2 kw Superstar follow spots

8 – 10' pipe and base booms

SOUND SYSTEM AND EQUIPMENT

L3 HARRIS TECHNOLOGIES THEATRE

SPEAKERS:

JBL Professional VTX A12 8/Side

JBL Professional VTX A12W 2/Side

JBL Professional VTX B28 6@Center

JBL VTX A-8 Deck Fills 3/Side

JBL VTX B-18 Deck Subs 1/Side

JBL SRX715 Balcony Delay 4 Boxes

JBL AC28/95 Front Fills 6 Boxes

AMPLIFIERS:

28 Crown I-Tech H12000 HD power all speakers

4 Crown IT4x3500 HDS Speak On Version

Version 6 Presets with Performance Manager console

AES Drive Lines

CONSOLE:

DiGiCo SD8 console with WAVES essential multi-effect package.

Local I/O 8x8 4x4 AES

Fiber Optic loop with 56x16 Analog I/O SD rack onstage with SD mini rack at FOH with 16 analog outputs 8 Analog inputs, 4 AES inputs and outputs

56 Channel copper snake with XLR fan out on FOH end and analog split on stage with XLR fan out

MONITOR SYSTEM

L3 HARRIS TECHNOLOGIES THEATRE

CONSOLE: Yamaha PM5D console
(24 discrete mixes available)

WEDGE SPEAKERS: 16 - JBL VTX M20 2x10
18 – JBL Concert Series Model 4802 (2 way)
2 – 12” speaker
1 – 2” horn

SIDE FILLS: 4 – JBL SRX 715
1 – 15” speaker
1 – 2” horn

MICROPHONES:

8 – Shure UR2 wireless handheld with Beta 87 Capsules
8 – Shure UR1 wireless body packs with Sennheiser MKE- 2 lavaliers

DYNAMIC:

- 16 – Shure SM58
- 10 – Shure SM57
- 2 – Shure Beta 52
- 9 – Sennheiser 421
- 2 – Audix OM-5
- 1 – Audix D6
- 4 – Audix D2
- 4 - Audix D4
- 2 – Beta 91

CONDENSER:

- 2 – AKG 414
- 2 – Shure SM87
- 6 – Shure SM81
- 2 – Shure BETA SM91
- 3 – Audix SCX1
- 4 – Shure 412 Podium Mics
- 4 – AT 2021
- 2 – AKG 214

DIRECT BOX: 14 – Countryman Model 85 (Active)
3 – Radial Stereo (Passive)

PAGING: Dressing rooms, green room, front of house and/or lobby

CURTAIN SCHEDULE

L3 HARRIS TECHNOLOGIES THEATRE

SIZE	COLOR	MATERIAL	QUANTITY	TYPE
32' H x 14' W	Black	Velour	6 pairs	Leg
16' H x 70' W	Black	Velour	5	Border
30' H x 70' W	Black	Velour	1	Backdrop
28' H x 60' W	Black	Velour	1	Traveler
30' H x 60' W	Green	Velour	1	Act Curtain
30' H x 60' W	Natural	Cloth	1	Cyclorama
30' H x 60' W	Black	Sharks Tooth	1	Scrim

ROAD COMPANY PROVISIONS

AUDIO

1 – 200-amp 3 phase disconnect (isolated earth ground) with cam connectors
Stage Right & Stage Left

LIGHTING

1 – 400-amp 3 phase disconnect company switch with cam connectors
1 – 600-amp 3 phase disconnect company switch

BUS POWER

3 – Bay each with 2-phase 250-volt, 50-amp receptacles

All electrical service is stage right, audio ONLY stage left (1) 200-amp service. All approximately 25' from proscenium. The building is equipped with one upright electric man lift, having a working height of up to 42'.

FLY SYSTEM

L3 HARRIS TECHNOLOGIES THEATRE

Arbor Capacity	1,500 lbs.
Arbor Capacity (Electrics)	2,000 lbs.
Batten Low Trim	4' off deck
Length of Travel	61'
Height to bottom of grid	67'
Height to pin rail	38' 6"
Available Weight:	
Upstairs:	15,000 lbs.
Downstairs:	4,550 lbs.
Total:	19,550 lbs.

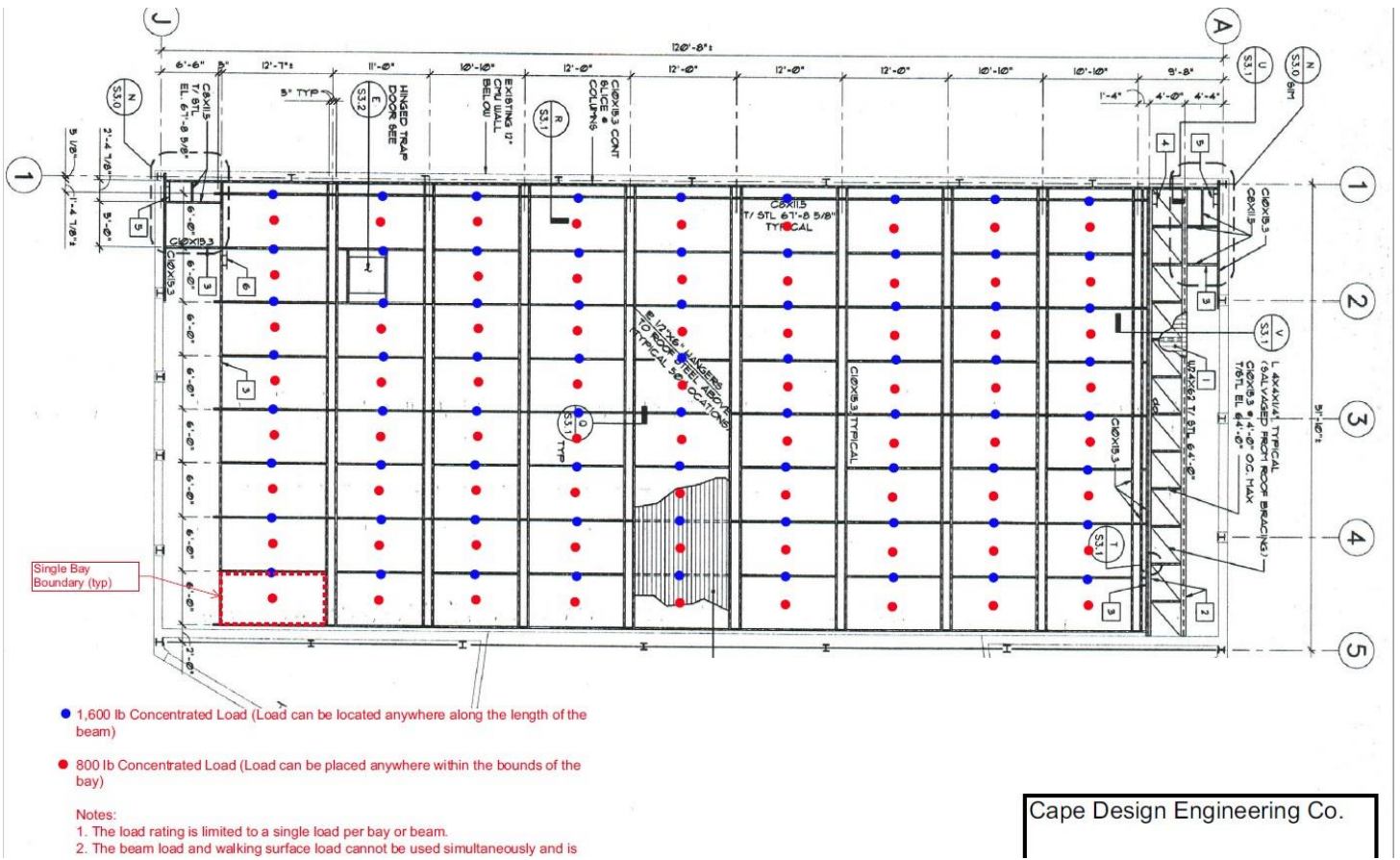
Pipe #	Distance from P.L.	Usage	Comments
A	0' 0"	Valance/F.C.	**Not removable**
B	0' 0"	Fire Curtain	**Not removable**
1	1' 2"	Spare	
2	1' 10"	House Main	Travel or Guillotine
3	2' 6"	Legs	
4	3' 2"	Band Shell	**Not removable**
5	3' 10"	1st Electric	House Lighting LED Pars
6	4' 6"	Spare	
7	5' 2"	Spare	
8	5' 10"	Spare	
9	6' 6"	Border	
10	7' 2"	Legs	
11	7' 10"	Spare	
12	8' 6"	Spare	
13	9' 2"	Spare	
14	9' 10"	Band Shell	**Not Removable**
15	10' 6"	Spare	
16	11' 2"	Border	
17	11' 10"	Legs (split)	
18	12' 6"	Legs (split)	
19	13' 2"	2nd Electric	House Lighting LED Pars
20	13' 10"	Spare	
21	14' 6"	Spare	
22	15' 2"	Spare	
23	15' 10"	Spare	
24	16' 6"	Spare	
25	17' 2"	Spare	
26	17' 10"	Band Shell	**Not removable**
27	18' 6"	Spare	
28	19' 2"	Spare	
29	19' 10"	Border	
30	20' 6"	Legs	
31	21' 22'	Spare	
32	21' 10"	3rd Electric	House Lighting LED Pars
33	22' 6"	Spare	
34	23' 2"	Spare	House Projection Screen
35	23' 10"	Traveler	**Track Not Removable**
36	24' 6"	Spare	
37	25' 2"	Spare	
38	25' 10"	Spare	
39	26' 6"	Spare	
40	27' 2"	Spare	
41	27' 10"	Spare	
42	28' 6"	Border	
43	29' 2"	Legs	
44	29' 10"	Spare	
45	30' 6"	4th Electric	House Lighting LED Pars
46	31' 2"	Spare	
47	31' 10"	Spare	
48	32' 6"	Spare	
49	33' 2"	Spare	
50	33' 10"	Spare	
51	34' 6"	5th Electric	House Lighting LED Pars & Mavericks
52	35' 2"	Spare	
53	35' 10"	Spare	
54	36' 6"	Spare	
55	37' 2"	Spare	
56	37' 10"	Spare	
57	38' 6"	Border	
58	39' 2"	Legs	
59	39' 10"	6th Electric	House LED Ovations
60	40' 6"	Spare	
61	41' 2"	Spare	
62	41' 10"	Cyclorama	
63	42' 6"	Blackout	

GRID IRON

L3 HARRIS TECHNOLOGIES THEATRE

Allowed Uniform Live Load Capacity

A total distributed live load of 20 psi is acceptable.



STAGE MAP

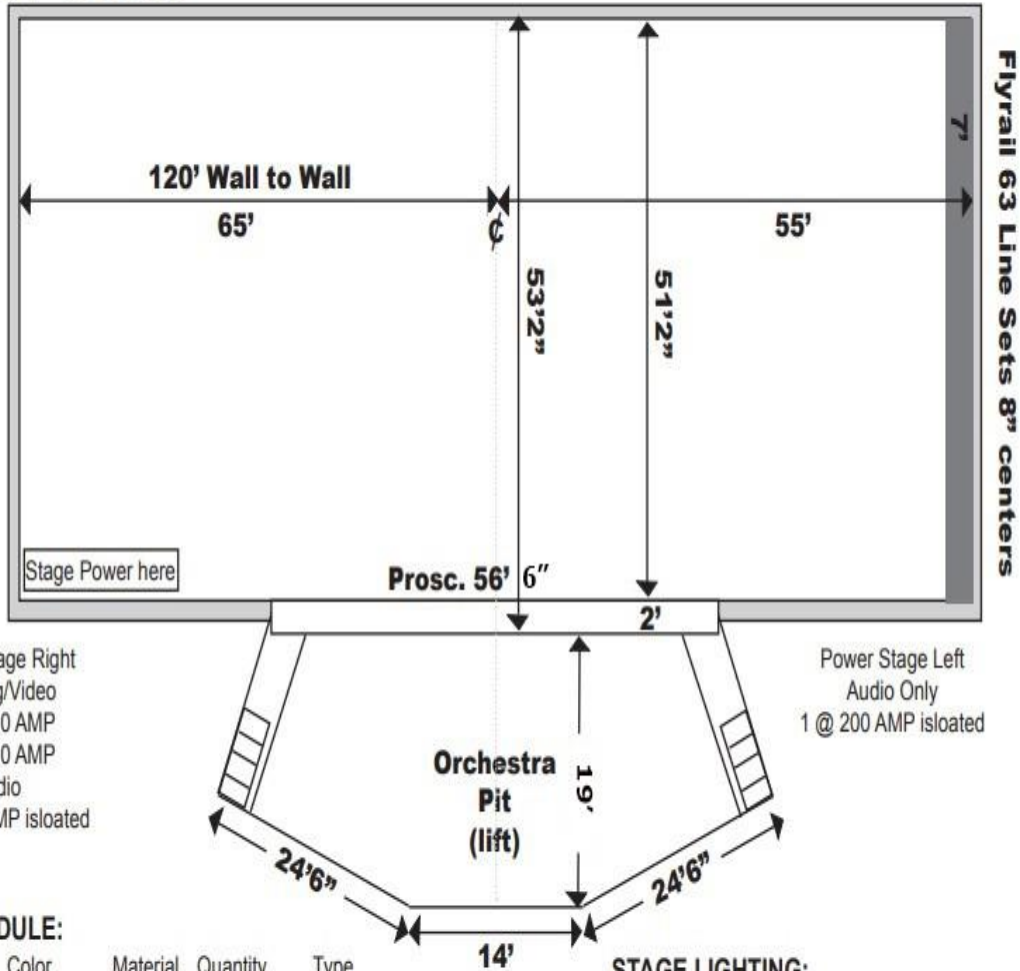
L3 HARRIS TECHNOLOGIES THEATER



Melbourne, Florida

Stage Map

Proscenium 27' x 56'6"
 Stage 120' x 53'
 Apron 2'
 Orchestra Pit 56' x 19'



CURTAIN SCHEDULE:

Size	Color	Material	Quantity	Type
32'H x 14'W	Black	Velour	6 pairs	Leg
16'H x 70'W	Black	Velour	5	Border
30'H x 70'W	Black	Velour	1	Backdrop
28'H x 60'W	Black	Velour	1	Traveler
30'H x 60'W	Green	Velour	1	Act Curtain
30'H x 60'W	Sky Blue	Cloth	1	Cyclorama
30'H x 60'W	Black	Sharks Tooth	1	Scrim

General House Goods Hang (48' Leg to Leg)

STAGE LIGHTING:

- Overhead fixtures are 26 Chauvet Par Quad (LED)
10 Martin Mac Quantum Profile (movers).
- FOH Fixtures are all S4-10 degree instruments.
Box boom units are S4-26 degree instruments.
- Spot Lights: 4-Lycian 1.2 kw superstar
- 68' to grid on stage.

Not to Scale
10/2017 DB

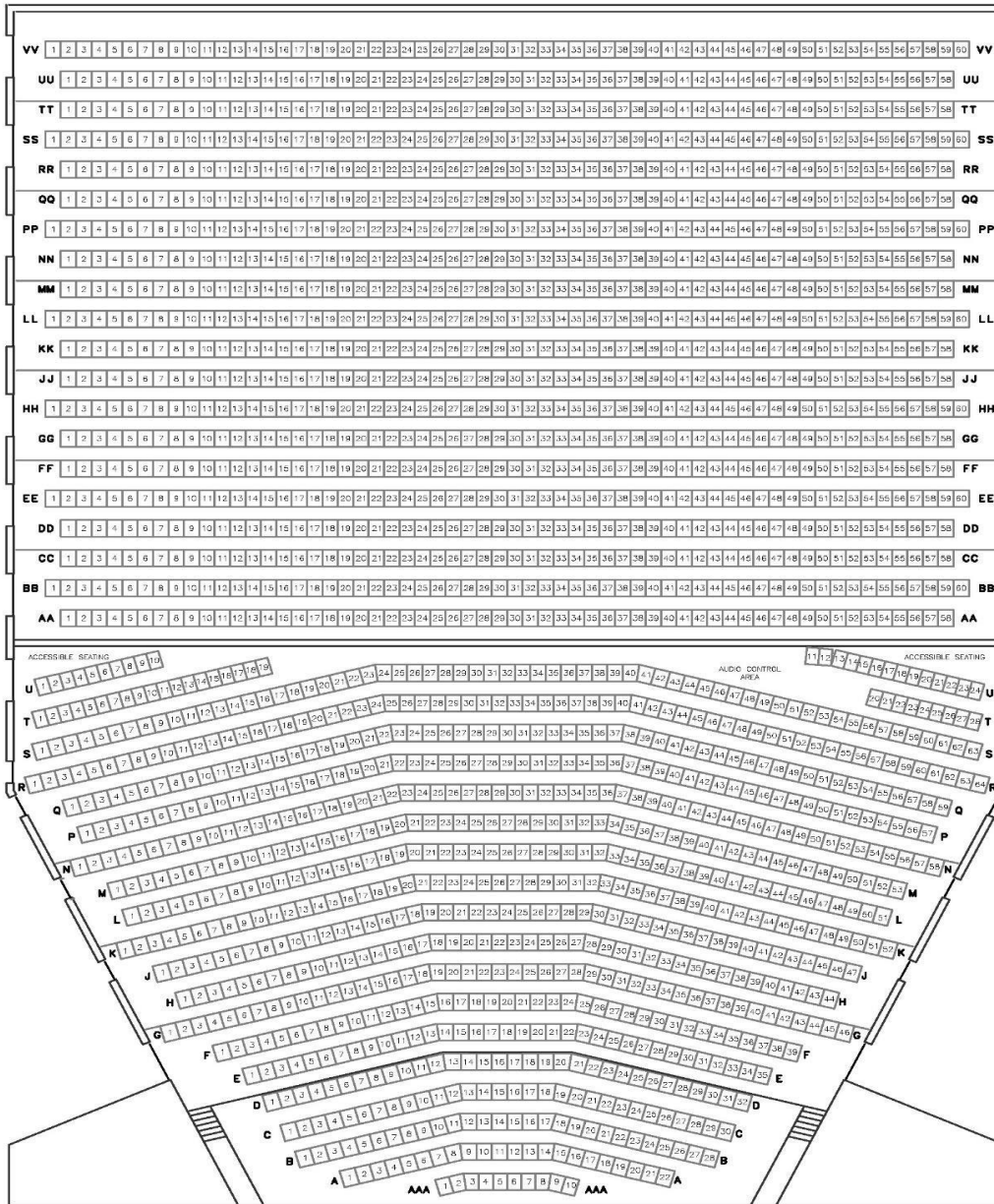


THEATER SEATING CHART

L3 HARRIS TECHNOLOGIES THEATER

GRAND TIER

GRAND TIER



ORCHESTRA

ORCHESTRA

Administration • 321.433.5719

Ticket Office • 321.242.2219

FAX: 321.433.5817



www.kingcenter.com
3865 North Wickham Rd. • Melbourne, FL 32935

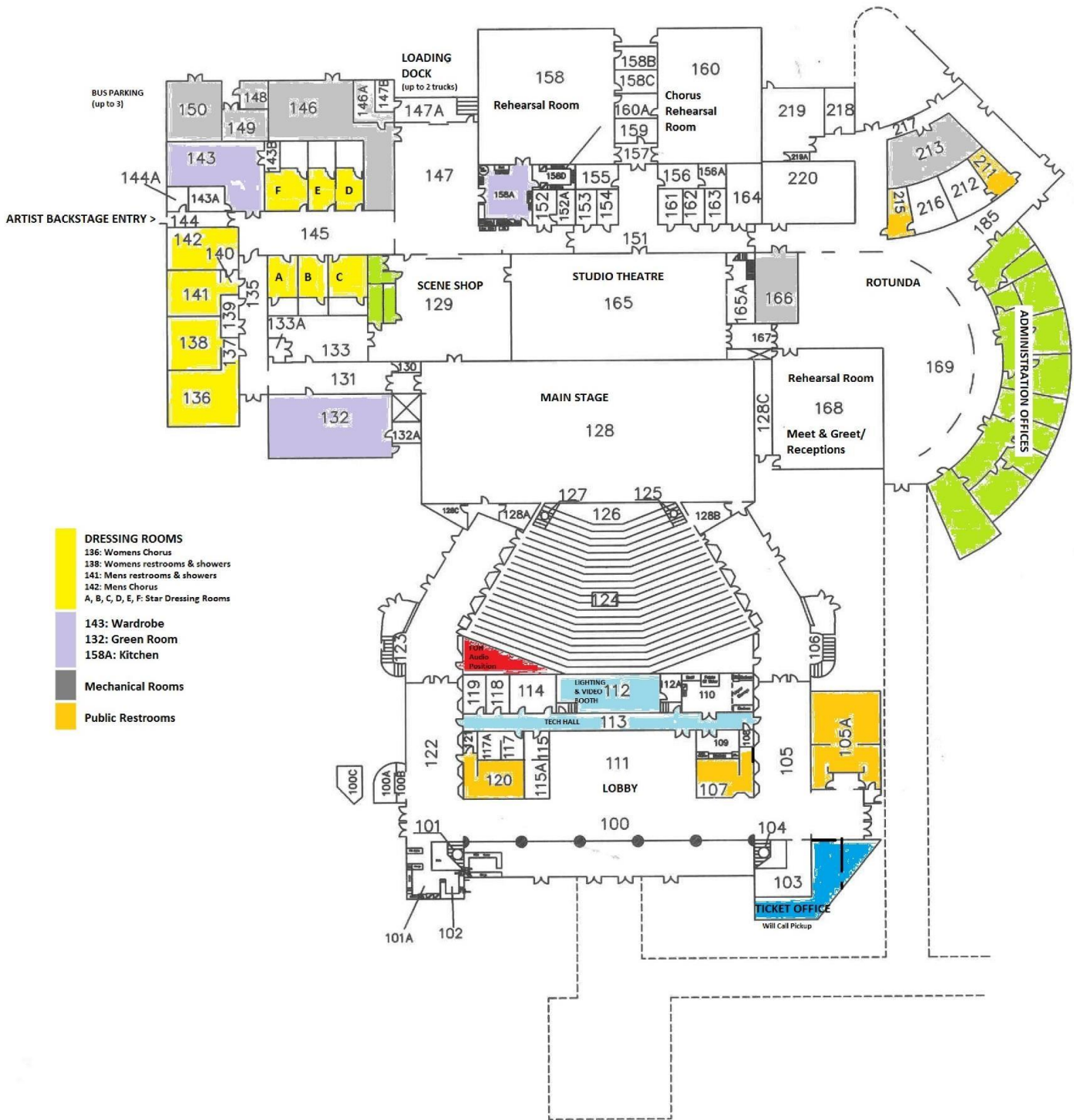
Total Seating Capacity	2016
Orchestra Pit	122
Orchestra	720
Grand Tier	1174
Accessible Seating (included in above numbers)	74

REVISION DATE : 08/2014



FACILITY MAP

MAXWELL KING CENTER FOR THE PERFORMING ARTS



FACILITY PARKING MAP

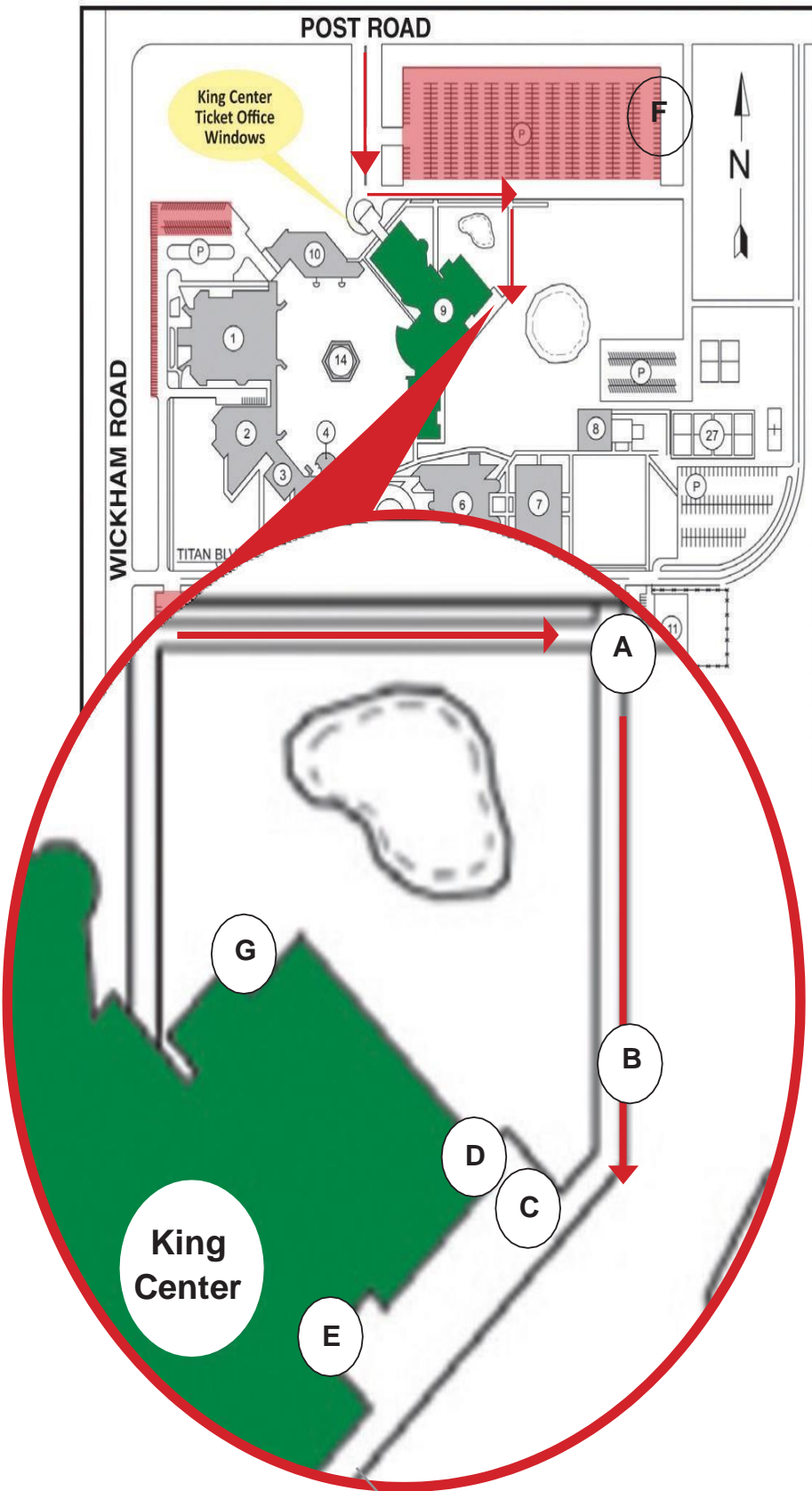
The King Center is located on the corner of Post and Wickham Roads in Melbourne, Florida.

Directions from Interstate 95 Southbound: Take Exit 188/East onto 404 Pineda Causeway Extension toward Satellite Beach/Patrick Air Force Base. At end of exit ramp, turn east (left) onto 404. Continue about 2.5 miles, then turn right onto CR-509/Wickham Road going south for 2 miles. Then turn left onto Post Road. The King Center entrance is on the south side of Post Road (first right).

Directions from Interstate 95 Northbound: Take Exit 188/East onto 404 Pineda Causeway Extension toward Satellite Beach/Patrick Air Force Base. At end of ramp turn right onto 404. Continue about 2.5 miles, then turn right onto CR-509/Wickham Road going south for 2 miles. Then turn left onto Post Road. The King Center entrance is on the south side of Post Road (first right).

Directions from Highway 1 Southbound: Heading south on Hwy1, turn right onto Post Road, continue for approximately 1.5 miles. The King Center entrance is on the south side of Post Road (on the left) just beyond the EFSC Tennis Courts. **Directions from Highway 1 Northbound:** Heading north on Hwy 1, turn left onto Post Road, continue for approximately 1.5 miles. The King Center entrance is on the south side of Post Road (on the left) just beyond the EFSC Tennis Courts.

KING CENTER ENTRANCE



King Center for the Performing Arts
3865 N Wickham Rd
Melbourne, FL 32935

Located on the campus of Eastern
Florida State College, Building 9 (in
green)

- A - Artist/Bus/Truck
Entrance**
- B - Gate (Code Required)**
- C - Artist Bus Parking**
- D - Backstage
Entrance**
- E - Loading Dock**
- F - Additional Semi-Truck
Parking**
- G - Green Room Outside
Entrance**

INFORMATION

STUDIO THEATER (BLACK BOX THEATER)



GENERAL:

Capacity: 250+/- flexible seating

Dimensions: 45' by 73' (3255 sq. ft.)
Ceiling height: 18' floor to grid (tension wire rope grid)
Direct entrance into scene shop

DIMMING AND CONTROL:

Grand MA3 on PC Command Wing
Circuits: 96

LIGHTING FIXTURES:

12 - Chauvet Rogue R2x Wash
6 - Lightronics 5in 1 LED PARS
5 - MH2 Martin Wash
6 - ETC 26* LEKO's
20 - S4 - PAR's

AUDIO CONSOLE:

Midas M32 Digital Console
Inputs 32 XLR, 8 AUX
Outputs 16 XLR, 1 AES

STAGE BOX:

Midas DL32 Digital Snake – 32 inputs / 16 outputs XLR

MAIN SPEAKERS:

Main hang: JBL Concert Series Model 4850 (2 per side flown)
Main deck: JBL Concert Series Auxiliary Sub Model 4842 (1 per side)
Down fill: JBL Concert Series Model 4825 (1 per side)
Zone control: DBX 4800
Front Fill: JBL Marquis Series Model MS26 (4 across front)

POWER AMPS:

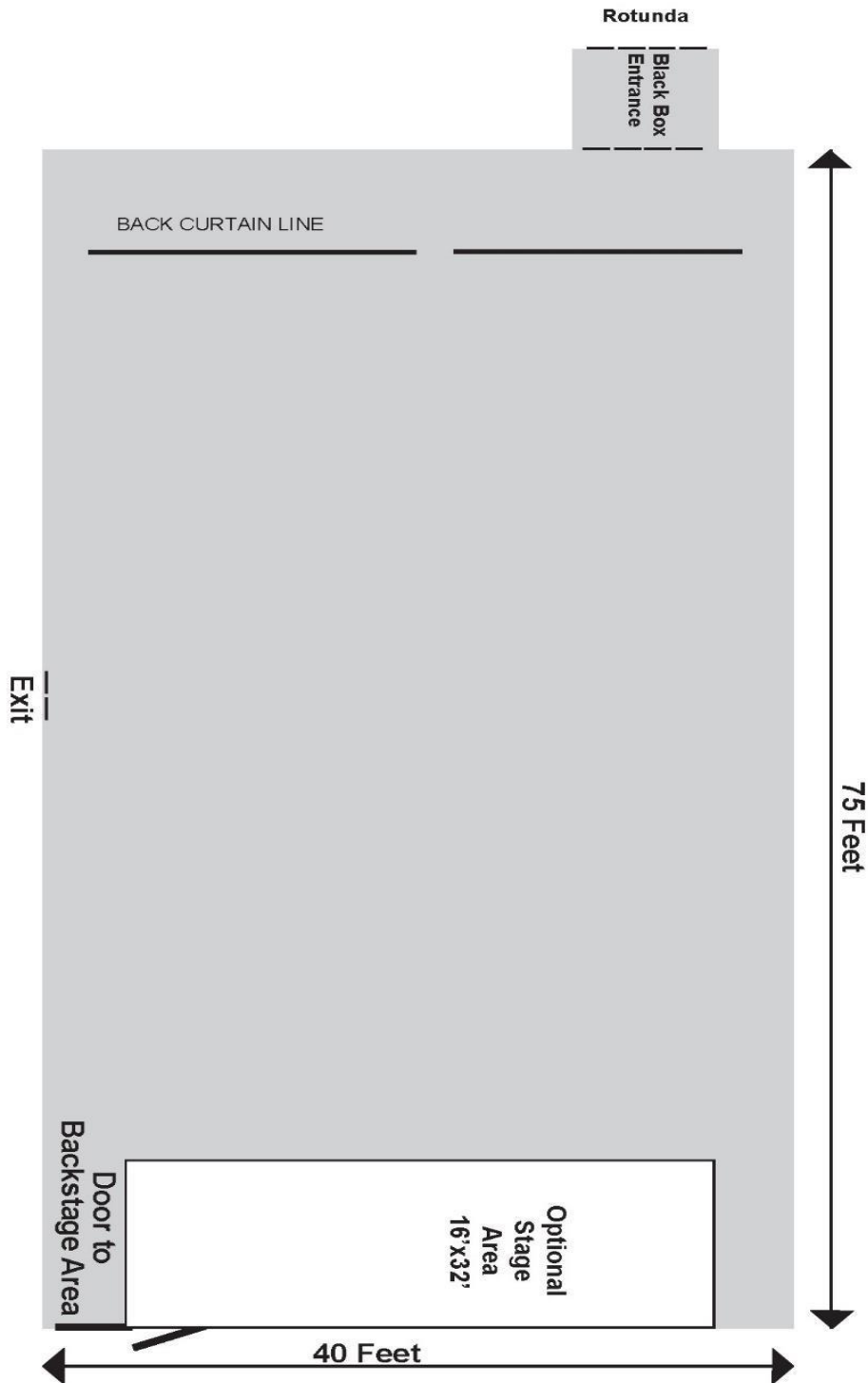
Crown I-Tech 6000 & 4000

MONITOR SPEAKERS:

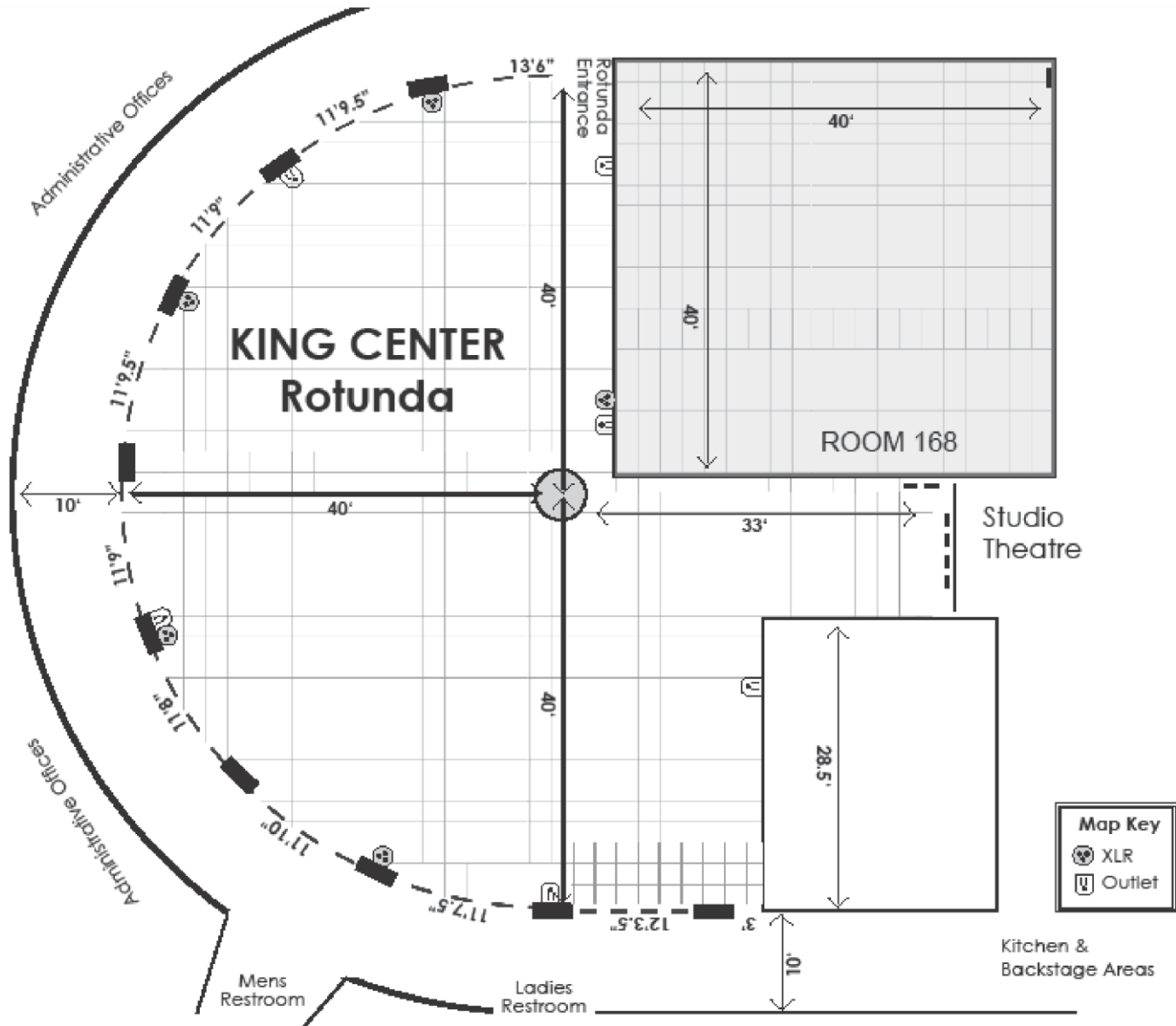
JBL Concert Series
8 Wedges Model 4802 A (12x12x2)
6 In House Wedge Mixes
All Crossovers for Monitors
BSS FS-318
All AMPS QSX 1500 (1 per cabinet bi-amped)

STAGE

STUDIO THEATER (BLACK BOX THEATER)



ROTUNDA DIMENSIONS OUTSIDE OF STUDIO THEATER (BLACK BOX THEATER)



THE END